

Connections

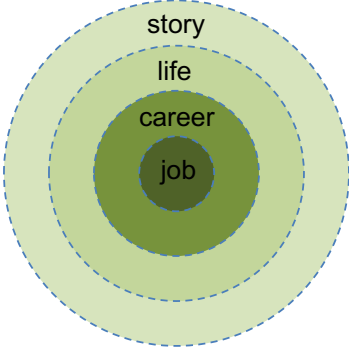
**Out-of-Home Care
Professional Learning Day**

Centre for Excellence
Melbourne, Victoria October 21, 2019
Ballarat, Victoria October 23, 2019

Gray Poehnell
graypoehnell@mac.com
www.ergoncommunications.com

1

An Expanding Focus of Hope



2

We all have a story.

The question is:
What kind of a story?

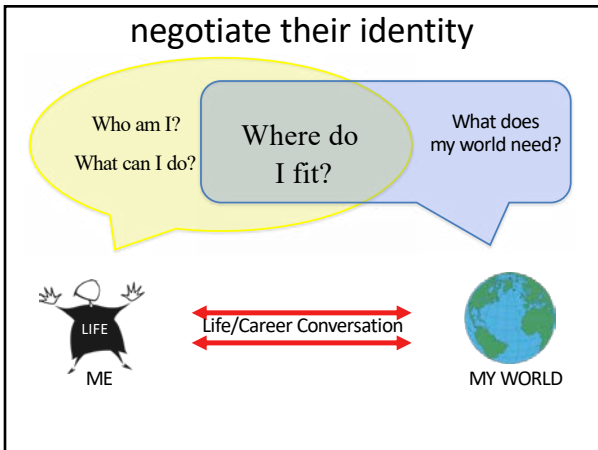
3

We all have a story.
Is it one of connection
or of disconnection?

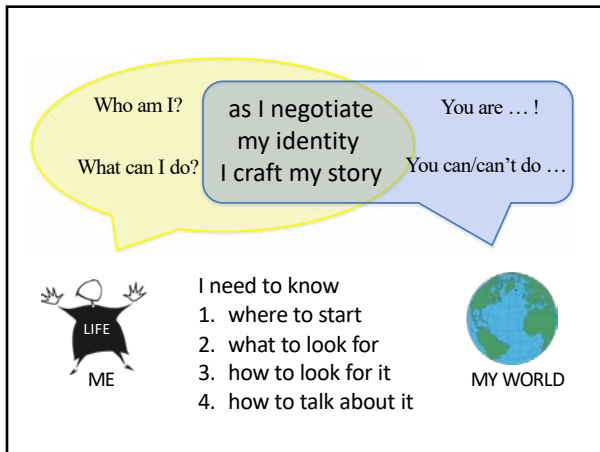
4

CAREER
is about you,
is about your world and your part in it,
is about your journey in this world,
is about crafting the story and the life
you really want to live
on your journey.

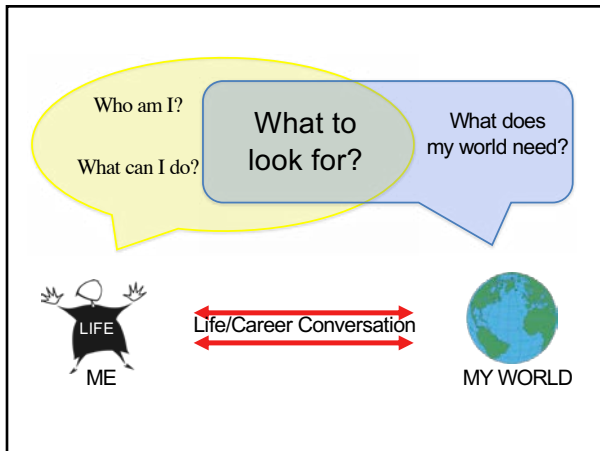
5



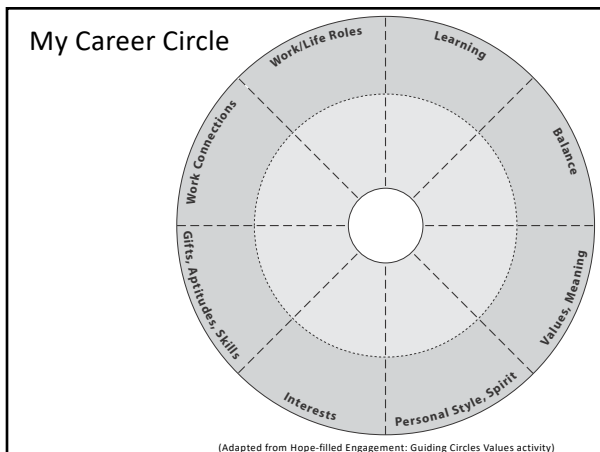
6



7



8



9

Connections

I am more than a list of skills, interests, etc.

(Adapted from Hope-filled Engagement: Guiding Circles Values activity)

10

Connections

Listen for the words of disconnection.

What is the impact of disconnection?

(Adapted from Hope-filled Engagement: Guiding Circles Values activity)

11

Identity in Context

Career Circle

Connections

12

POSSIBILITIES

The diagram shows two boxes. The left box, labeled 'problem', contains a drawing of a whirlwind and is titled 'Living with the Whirlwind'. Below it is a red box with the text '“I can’t because ...”'. The right box, labeled 'reality', contains a drawing of a person with arrows pointing outwards and is titled 'Living with Possibilities'. Below it is a green box with the text '“What can I do?”'. Green arrows point from the 'reality' box back to the 'problem' box, and blue arrows point from the 'reality' box to the four corners of the box.

(adapted from The Art of Possibilities, Zander & Zander)

13

The diagram consists of concentric circles representing different levels of influence: COMMUNITY, FAMILY, and SELF. Four arrows point from the center towards the outer circles, labeled 'influences', 'roles', 'affects', and 'support'. The outermost ring is divided into four quadrants: SPIRITUAL WORLD, NATURAL WORLD, CULTURE, and COMMUNITY.

Connections

What are some of the life roles you've taken on in your life so far?

(Adapted from Hope-filled Engagement: Guiding Circles Values activity)

14

The diagram consists of concentric circles representing different levels of influence: COMMUNITY, FAMILY, and SELF. Four arrows point from the center towards the outer circles, labeled 'influences', 'roles', 'affects', and 'support'. The outermost ring is divided into four quadrants: SPIRITUAL WORLD, NATURAL WORLD, CULTURE, and COMMUNITY.

Connections

What are some possible sources of support that people may have in life?

(Adapted from Hope-filled Engagement: Guiding Circles Values activity)

15

Connections
Brainstorm possibilities for each sphere:

- People?
- Activities?
- Places?
- Concepts?
- Things?

(Adapted from Hope-filled Engagement: Guiding Circles Values activity)

16

Connections Reflective Questions

- What do you notice when you look at all the possible supports?
- Where are most of these supports?
- When do we tend notice these supports?

(Adapted from Hope-filled Engagement: Guiding Circles Values activity)

17

Connections Reflective Questions

Once you've looked at all the possibilities, then personalize it by asking?

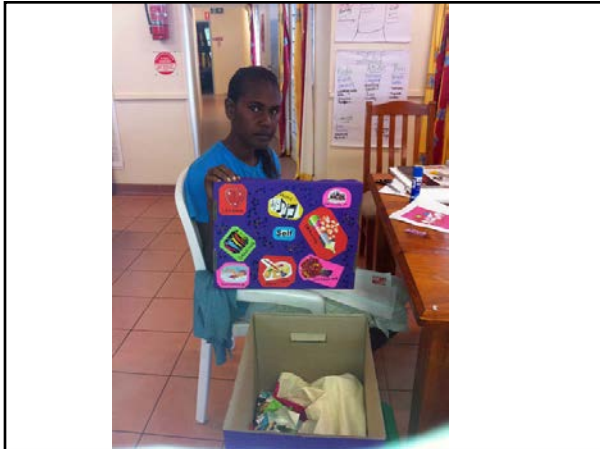
- Which of these do I have in my life now?
- Which of these don't I have? What indirect connections do I have to these?
- How can I cultivate my awareness of these supports?

(Adapted from Hope-filled Engagement: Guiding Circles Values activity)

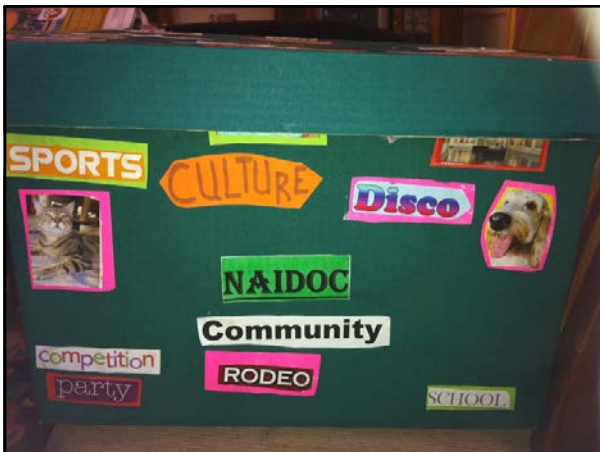
18



19



20



21



22

Connections

**Out-of-Home Care
Professional Learning Day**

Centre for Excellence

Melbourne, Victoria October 21, 2019
Ballarat, Victoria October 23, 2019

Gray Poehnell
graypoehnell@mac.com
www.ergoncommunications.com

23
